

1-081 Compression Latch Pr20.1

Tool or hand operable, IP65, Heavy duty

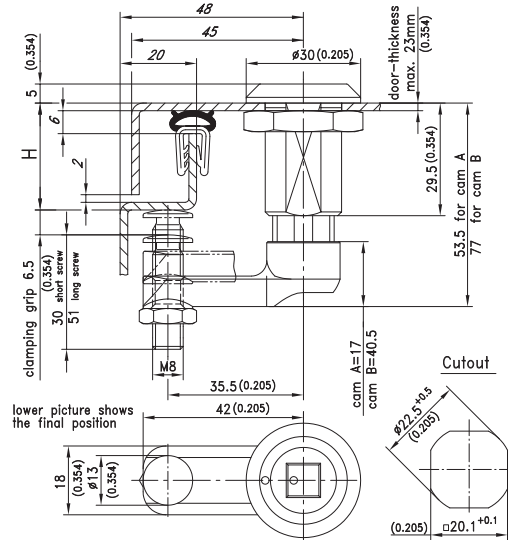


Product Notes:

- Two 90° rotations first secure door closed and then apply compression
- Aligned marks indicate final closed and compressed position
- H-dimension is adjusted with adjusting screw
- Water and dust tight according to IP65, DIN EN 60529.
- For assembling refer to page 01.13.
- RH and LH versions available
- Provides 6.5mm compression

Material:

- **Housing:** Zinc Die, Chrome Plated or black
- **Insert:** brass, Chrome Plated, Zinc Die, Black or Chrome Plated
- **Drip handle:** Zinc Die, Black
- **Spring:** Stainless Steel
- **Cam:** Zinc Die, Chrome Plated
- **Adjusting screw:** Steel, Zinc Plated
- **Nut:** Steel, Zinc Plated



a) Housing, Zinc Die, Chrome Plated		LH	RH
with flat external seal and			
	Nuts	100-9001	-
	Grounding nut	100-9002	100-9013
a1) Housing, Zinc Die black, with flat external seal and			
	Grounding nut	100-9014	100-9015
b) Insert with O-ring, spring and peg			
Square 7mm	100-9104	Slotted 2x4mm deep	100-9109
Square 8mm	100-9105	Drip handle**	100-9110
Triangular 7mm	100-9106	(Cam in line with handle)	
Triangular 8mm	100-9107	** (Shape - see page 01.55)	
Double bit 3mm pin	100-9103	Drip handle*	100-9111
Double bit 5mm pin	100-9102*	(Handle - 90° to the cam)	
Hex 10mm	100-9101	Hex 7/16"	100-9132
Socket head 5/16", Zinc Die, Chrome Plated			100-9114
Socket head 5/16", Zinc Die, Black			100-9123
a) + b) Special version: insert and housing for Transportation			on request
c) Cam with adjusting screw and nut M8		LH	RH
H in mm	0-37 (cam A, long screw)	200-9611	200-9614
	21-34 (cam A, short screw)	200-9610	200-9618
	24-60 (cam B, long screw)	200-9613	-
	45-60 (cam B, short screw)	200-9612	-
d) Assembling (required)			200-0064
• Assembling: drip-handle 90° left door			200-0070
• Assembling: drip-handle 90° right door			200-0071
* Price and delivery time on request			